

WESTERN YACHTING & BOATING

# Sea



COLORADO RIVER MARATHON  
SAN MIGUEL ISLAND ★ A WORTHWHILE GADGET

December, 1951

35 Cents



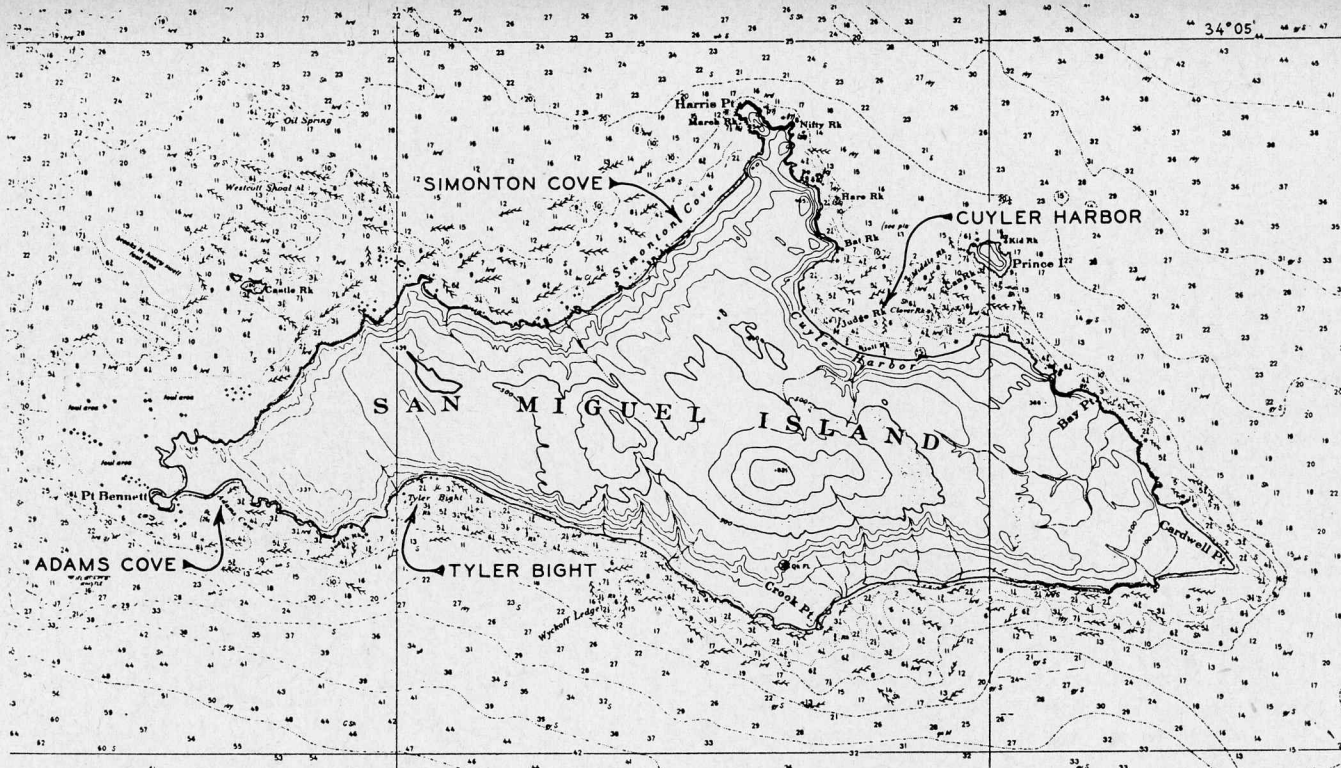


Chart of San Miguel Island, showing its intriguing outline and the many dangers that surround it.

# SAN MIGUEL ISLAND

The Most Interesting of All the Channel Islands

By ARTHUR R. SANGER

SAN MIGUEL is the most picturesque and windy of all the Channel Islands. It is situated about 45 miles southwest of Santa Barbara.

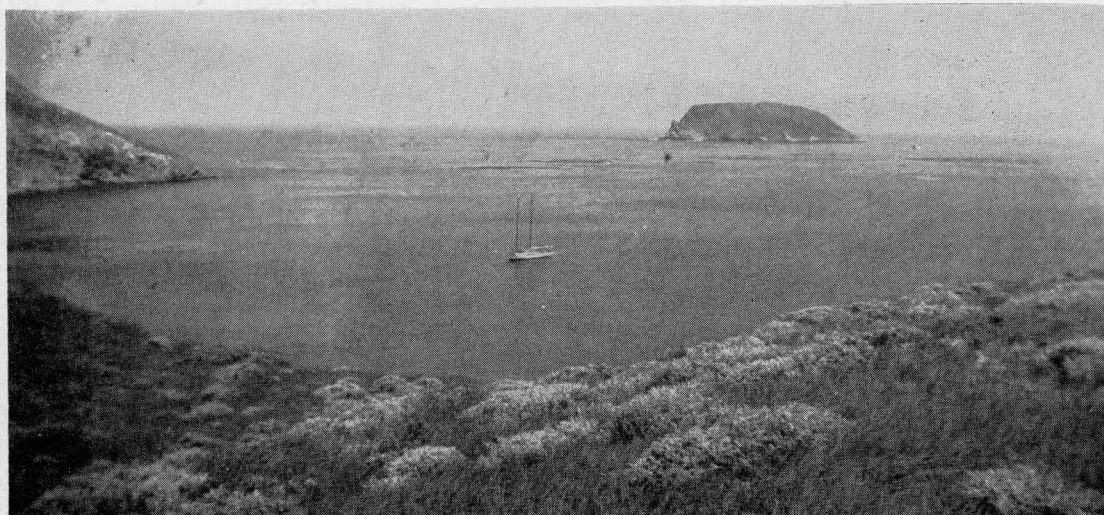
Because of the strong winds that sweep across its surface, very few white men have ever lived there, although in the past there were thousands of Indians, whose bones can be easily found. There are also great mounds of discarded abalone, mussel, clam and snail shells, millions of seal, fish, bird and animal bones together with sea urchin, lobster and crab shells, all mixed with the ashes of countless fires.

Near the top of the island, 800 feet above the ocean, you can see an old beach or stratum of large fossil oyster shells several feet deep. This is proof that thousands of years ago there came a great upheaval, pushing the surface of the island nearly a thousand feet upward and forming a long peninsula

which included Santa Rosa, Santa Cruz and Anacapa islands in addition to San Miguel. The base of the peninsula was probably at Point Mugu. Years later, along this peninsula wandered from the mainland many pigmy elephants, some of which died or were killed on the South side of San Miguel. Herb Lester took me to see the large fossil remains of these animals and the beach of oyster shells he had discovered.

Then came thousands of years of strong winds and ocean erosion, which cut through the soft parts of this peninsula, forming the present islands. It must have taken at least 100,000 years to do all this, and when you think of the 60-year life span of Man, you wonder why we are here for so short a time.

When I first visited San Miguel the white sand covered almost the entire western half of the island. Around the ranch house it had become quite deep, for you could walk over the



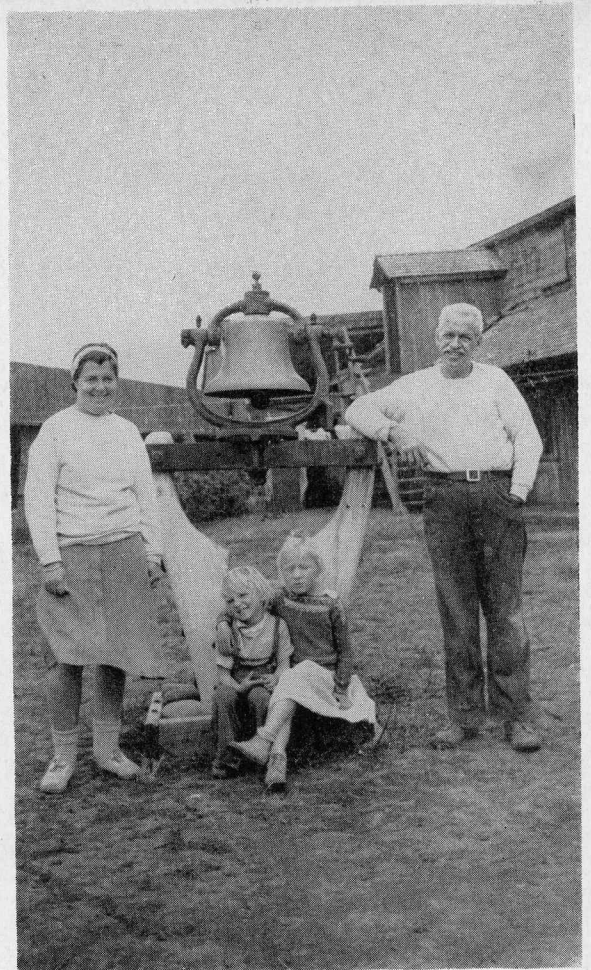
Looking northeast across Cuyler's Harbor toward Prince Island. Art Sanger's 50-ft. schooner Dreamer at anchor.





*Left: Bones of the vanished Indian population are plentiful, as well as many other reminders of their occupation.*

*Mr. and Mrs. Herbert Lester spent 13 years on San Miguel and raised their two daughters there. The bell, which was used to call the children to school, was a relic of a schooner that was wrecked on the island, along with the boom jaws on which it is mounted.*



large protecting fence and down into the patio on this sand. Today most of it has been blown into the sea at the eastern end of the island, forming a long sand split there.

Originally this island was covered with shrubbery, like Catalina. Then about 1850 Mr. X of Santa Barbara put 300 sheep on it. He then went off to the gold fields in the North and when he returned three years later the sheep had eaten all the leaves from the shrubbery, causing it to die. With no protection, the sand started to blow away and erosion started in earnest. In large sections of the island you can see the roots of this shrubbery, which has become encased in limestone, drawn up from the surrounding soil by the moisture in the roots. These roots are now sticking up in the air, making a fantastic picture.

Like several of the other islands off the Southern California coast, San Miguel is now held by the Navy and nobody can land there. This condition, however, is bound to change some

day, and then you may want to visit this weird bit of rock and sand. There are three ways for you to go.

First, you can take it the hard way by smashing right through to Cuyler's Harbor. Unless you are in a hurry, don't do it, because if you arrive near the island in the late afternoon, the chances are you will take an awful beating.

Second, if you can take a week off and if your boat will carry enough gas, you can start from Los Angeles, Newport-Balboa or even San Diego and on the first day you can make the Isthmus, Howland's or Johnson's with a power boat. If you have an auxiliary, you had better go to Newport or Los Angeles if you start from San Diego. From one of the coves near the westerly end of Catalina, you can make Pelican Bay on Santa Cruz Island before the wind dies. Then early the following morning get under way for Cuyler's Harbor.

Third, if your boat will not carry enough gas, start early in

*(Continued on Page 33)*

*The buildings on the Lester Ranch were picturesque and interesting. The little white building is the schoolhouse. The Lesters created a comfortable and characterful home on the desolate island*





# WING SANG

711 COAST HIGHWAY — PHONE: BEACON 5414 — NEWPORT BEACH, CALIFORNIA

**BETTY CHATTOCK**

Yacht Broker

Res. Phone: Harbor 0254-J



**POLLY MERRILL**

Sales Dept.

Res. Phone: Harbor 2986-J

## SAIL BOATS

56 ft. Schooner, Weyland Design, Slps 8, Elec. Refrig. Ex. Cond. \$25,000.00  
23 ft. Sloop, Slps 4, very roomy, 1948 Sails, Asking 2,350.00  
45 ft. Schooner, Heavily Blt. Designed by Hand, Asking 9,500.00  
27 ft. Sloop, Blt. '39 St. St. rig. slps 4, s-s, galley and head, 4,000.00  
20 ft. Sloop, Blt. '37 St. St. rig. nylon run. rig. excellent cond. 1,500.00  
P C's—Three in Excellent Condition, Priced \$3,400 to 4,000.00

## POWER BOATS

47 ft. TS Shane Trimmer Ship, Beautiful Condition, Blt. 1947, Flying Bridge, SS, Pressure system, 2 heads, \$25,000.00  
24 ft. TS Sport Fisher, Blt. 1950, Slps 2, Ex. Cond. asking 4,750.00  
28 ft. Hunter, Gray 6-71, Slps 4 SS, 3,300.00  
26 ft. Chris Craft, Blt 1940, Chris Craft 6-95, Bait tank, 4,250.00  
24 ft. Hunter, Gray 6-71, Slps 2, Bait tank, 2,200.00

WE HAVE BOATS OF ALL CLASSES, SIZES, PRICES

REMEMBER OUR ADDRESS — SEVEN COME ELEVEN (711)

*We cannot guarantee to sell your boat, but at least we would like to try. Why not list it with us?*

## COLORADO RIVER MARATHON — OCTOBER 7, 1951

Pos.	Boat No.	Driver	From	Boat Make	CLASS						Elapsed Time
					A	B	C	D	E	F	
1	245-C	Raymond Eichman	San Francisco	Rockholt		1					3:42:21
2	158-C	John Alden	Oakland	Homemade		2					3:55:50
3	422-C	Bill Mills	Needles	Homemade				1			3:38:10
4	18-X	Bob Knapp	Pasadena	Higgins		3					3:58:24
5	24-X	S. C. Richmond	Fresno	Rockholt				2			3:41:10
6	363-C	Devane Smiley	Needles	Speedliner					1		3:56:18
7	42-C	Walt Riggsbee	Needles	Speedliner				3			3:42:58
8	6-X	W. C. Kaiser	Needles	Aerocraft			1				4:31:09
9	25-C	Bud David	Modesto	Rockholt	1						4:38:30
10	26-X	Leslie Ryther	Needles	Speedliner				4			4:13:58
11	66-T	John R. Case	El Paso, Texas	Inland					2		4:14:19
12	707-C	Smith Weeks	Fresno	Rockholt						1	4:24:52
13	107-C	Cliff Gressom	San Raphael	Rockholt		4					4:34:01
14	80-T	C. B. Norton	Jol, New Mexico	Speedliner				5			5:14:56
15	90-C	W. J. England	Needles	Inland			2				5:13:45
16	148-C	Bill Roland	Bakersfield	Rockholt	2						5:51:12
17	30-X	Tom Bowen	Oceanside	Homemade		5					5:28:18
18	378-C	Hugh Firkins	Gardena	Homemade			3				5:54:30
19	338-C	James V. Davidson	Yuma, Ariz.	Wizard				6			5:47:44
20	13-N	Tom Ryan	Fresno	Century						2	6:25:26
21	6-C	Horace Chambers	Needles	Fleetliner		6					6:35:50
22	8-X	Noel Byers	Blythe	Rockholt	3						8:06:39
23	528-C	Don Beck	Santa Barbara	Inland		7					8:00:38

## SAN MIGUEL ISLAND

(Continued from Page 13)

the morning and go to Paradise Cove, Hueneme, or if you are fast enough, drive through to Santa Barbara, where you can refuel. Then, getting another early morning start, head toward

Santa Rosa Island. When you are about 10 miles off it, change course for San Miguel. This procedure will keep your bow at an angle to the head seas, which is better than meeting them directly head on or broadside.

If you go too far up the coast above Santa Barbara before

## RICHARDSON YACHT ANCHORAGE

Several open utility type launches from.....	\$ 300	33' Wheeler Sunlounge Chrysler power, full covers, blt '47....	8,500
23' 1948 Sport Fisher, S S Radio, Fish Chair, Aux. Gen. Excel. Cond. ....	3,200	35' 1946 twin sc. cruiser, slps 6, ss radio, Co2, dinghy.....	11,500
24' Cabin fish boat, Dbl. bot. Slps 2, head, galley, bait tk....	1,500	38' Twin scr. Matthews, fr water cooled, hot water, elec refrig	16,500
25' Chris Craft twin screw, blt 1941, fish chair, ship to shore..	5,250	38' Twin scr. Hunter, bait tank, radio, full covers, new chrome	12,750
26' Richardson, Gray motor, fish chair, outriggers, new full cover .....	3,750	40' Tw. scr. Matthews Spt. fisher, blt 1949, fly bridge, bt tk...	24,000
30' Stock sport fisher, 35W radio, fish chair, box, outboard motor .....	6,850	42' Twin scr. Truscott, fly bridge, hot water shower, excel. family boat.....	24,000
30' Stock enclosed bridge cruiser, Chrysler crown, ss radio, bait tank .....	6,000	49' Twin scr. Shain dbl cabin cruiser, auto pilot, fly bridge....	25,000
32' Stephens cruiser, Chrysler crown V drive, slps 4 dinghy....	8,500	65' Cruising yacht, depth recorder, ss radio, cheery interior..	25,000
		59' Diesel motor sailer, Alden design, slps 8, new sails in '51	30,000
		65' Ketch rigged diesel motor sailer, Grebe design, real yacht	45,000
		67' Ketch rigged motor sailer blt by Wilbo, slps 8, 2 heads..	60,000

Many good listings in aux. sail boats from 25' to 80'

WE NEED GOOD POWER AND SAIL BOAT LISTINGS

**EILEEN RICHARDSON, Broker**  
Box 35, Balboa Island, Calif.

**ED RICHARDSON, Salesman**  
Phone: Harbor 369

taking off for San Miguel, you will find the seas almost broadside. This is all right for a husky sailing craft, but not so good for a power cruiser.

My advice would be to take the No. 2 trip and enjoy it. I used to take several 5-gal. cans of gas and store them in the cockpit, covered with canvas. If you do this, do not let anybody smoke on deck. On arrival at Santa Cruz Island put the gas in the tanks.

After passing the West end of Santa Cruz, your course will be almost due West, taking you along the North shore of

Santa Rosa. Keep well out beyond the kelp, as there are several reefs along this coast. Rodas Reef is over half a mile from shore.

As you near San Miguel you will see a tall, dark hill between yourself and Cuyler's Harbor. This is Prince Island, 303 feet high, and is about one mile from the anchorage in Cuyler's. There are two ways to go around this island and into the harbor. To take the regular course, you go to the right of the island and keep at least 100 yards out as this is a lee shore and not at all healthy.

As you come to the passage you will see a bad rock and reef on your left, over which the seas break. Keep well to the right, or West of this. On your right you will see a point of land jutting out toward you from the northwest side of Cuyler's Harbor. Do not go too near this as it is shallow at low tide. After passing the point on your right, change course to the westward toward the first of three old wharves (or what is

## Clark Sweet

Sales • Charters • Insurance

LIDO PENINSULA SHIPYARD

900 31st St., Newport Beach, Calif.

Harbor 301



Here is one of those famous 83' coast guard boats. Ideally suited for conversion to a luxury yacht or used "as is" for pleasure or commercial purposes. Powered by twin Gray diesels with pilot house controls. Fuel capacity 2100 gals. Two (2) 10 kw generators, 50 watt radiotelephone, direction finder, etc. Sleeps 17. Has had very little conversion work done. Aft section is one large hold easily converted to cabins or used "as is." This hull has had good care, has been recaulked and port holes installed, and has never been damaged.

Asking price: \$25,000. Or will consider trade for good small boat or Newport water front property.

Ask about the truly successful conversion of this hull. See the Dincat and Dinkitten Plastic Sailing Dinghies.

## NEWMARKS' YACHT CENTRE

### 46' HUSKY COLIN ARCHER NORWEGIAN CUTTER

46'3" x 40' x 12'8" x 7'6". Designed by Colin Archer, built in Norway. 1-3/4" Norwegian Pine planking. Oak frames. Teak decks & trim. 250 Gal. Water, 85 fuel. Gray 4-52 H.P. Eng. CO2 system. S-S Radio. Stainless rigging. Watts sails, 1951. Merriman fittings. Compact galley. Accommodates 8 in 3 cabins. Fireplace. Teak floor, desk, etc. Smart sailer, all weathers. Nothing like it—\$17,500.00.

### 40' TWIN SCREW 1951 DELUXE EXPRESS CRUISER

40' x 12' x 3'. Designed by Hacker. Selected cedar planking (double bottom). Everdur fastened to Oak frames. Stem, knees, keel are Bigac. Honduras Mahogany deck & trim. Chry. Royals, 143 H.P. 258 gallons fuel, 70 gallons water. CO2 system. Aux. Generator. S-S Radio. R. D. F. Allen Pilot Blowers, etc. Accommodates 6 in 3 cabins. All Airfoam. Large Galley. Large cockpit fully furnished for fishing. Entire boat in perfect cond. An exceptional buy at—\$23,500.00.

**ANCHORAGE • BROKERAGE • SERVICE**  
P.O. Box 307 Wilmington, Calif. Terminal 4-2830

### yacht slips BOAT SALES marine supplies

SAIL		POWER	
36' Ketch, '47, go anywhere.....	\$9,000	32' Lowman, Clean .....	\$3,500
22' Aux. Atkins Sloop.....	1,150	22' Cruiser, Eng. Rebuilt .....	1,250
20' Aux. Yawl .....	995	30' Cruiser, Slps. 6 .....	2,800
27' Aux. Sloop .....	1,750	40' Diesel Cruiser .....	7,000
42' Aux. Yawl .....	4,500	43' Tw. Sc. Cruiser, Blt. '42 .....	
18' Sloop w/Outboard .....	550	Autopilot Dir. Finder, Fully Found .....	12,000

Yacht Slips For Rent 60c per foot

**City Yacht Anchorage**

1700 W. 9th

Phone 60101

LONG BEACH

Turn Right at Foot of Santa Fe

### RHODES 33 (Postwar)

SAVE \$2584

No. 36, sharpest of the fleet, all new condition (refinished October, 1951), new mast, improved rigging installed 1951, complete Watts racing sails, plus extra Genoa (new June, 1951), linen sheets, halyards, Koroseal cockpit cushions, Kapok cushions below, scarcely used 2 1/2 H. P. Johnson, plenty of extra gear, i. e., anchors, chain, line, covers, in 4.0 condition. Price: \$4950.

J. E. COBERLY, JR., 1400 W. 8th St., Los Angeles  
Phones: DU 7-4242, WY 4609

### WINTER BARGAINS

	Was	Now		
18' Sloop .....	\$ 700	\$ 500	40' Harco .....	\$16,500
22' Chris Speed Boat. 1,100	700		55' Motor Sailer .....	32,500
38' Fellows & Stewart. 7,000	6,000		26' Fellows Cruiser .....	2,200
22' Gar Wood Sp. Bt. 2,200	1,900		65' AVR Deisel Cruiser .....	30,000
18' Fisher .....	1,200	950	39' Wheeler .....	9,500

### HIRTH HARBOR

803 Bayside Drive, Newport Beach

Phone: Harbor 0974

### SEASON'S GREETING TO ALL

8' Sabots, Very Clean.....	\$150-\$225	17' Thistle's Fine Val..	\$1,050-\$1,350
10' Lehman's, Many Ext.....	\$450-\$500	16' Utility, Extras, Ref., Oct.....	\$900
12' Snow Birds, Good Val.	\$300-\$500	17' Utility, 60 H.P. Xlnt.....	\$895
14' Int. 14 Complete.....	\$550-\$1,000	22' Aux. Sloop, Good Cond.....	\$1,495

FINEST SMALL BOAT LISTINGS ON WEST COAST

### W. D. SCHOCK, YACHT BROKER ASSOCIATE, FRED SCHENCK, JR.

504 - 29th St. Newport Beach, Cal. Harbor 1851-J

### HUGH M. ANGELMAN DESIGN — BROKERAGE — COUNSEL

Hugh M. Angelman

Charles Davies

SEA HILLS, PORTUGUESE BEND CLUB  
via Palos Verdes Estates, Calif.  
FRontier 7-4519

### EDWIN MONK

EDWIN MONK

LORNE GARDEN

### NAVAL ARCHITECTS

1500 Westlake N., Seattle 9, Wash.

Office Phone: GARfield 7907

Residence Phone: HEMlock 4415



left of them), that is, the one farthest out or nearest the point.

I would advise anchoring near the shore anywhere between the first old wharf and the large landslide at the northwest side of the harbor, but far enough out so that you will not swing onto the rocks that line the shore, if the wind should shift to the eastward. I said close in because the further out you anchor the larger the waves and the stronger the winds you will have to endure.

Do not try to navigate the South and East sides of Cuyler's Harbor. It is very rough there and there are some bad reefs.

Be sure to have good ground tackle and plenty of scope. Many a time I have put down both a 175-lb. and a 150-lb. Navy anchor in calm weather here and during the night have thanked my lucky stars I did, for the wind comes from the West over the cliffs and drops down on you like a ton of bricks. Then if your ground tackle is not heavy enough you may be in plenty of trouble.

In this part of the bay there is a fine beach to land on.

Now let us consider the passage to the East and South of Prince Island. As you approach San Miguel from the eastward you will see a long sandspit pointing toward Santa Rosa Island, and on which the waves are forever breaking. Keep away from all sides of this. If the sea is bad and you are having a wet time trying to make the West side of Prince Island to take the regular channel, you can turn to the left or shore side of Prince Island. Keep close to the island and in its shelter follow the island around on its inside. When you get near the South end of it, then turn on the regular course into Cuyler's Harbor.

This is the way I have always gone because I could easily pick my way, keeping the bad reef at the entrance to the bay on the left. In going in this way I could enjoy a great spectacle when I scared thousands of sea birds into the air from the southeast end of Prince Island.

Cuyler's is one of the most picturesque harbors in the West. It is almost a perfect circle, flanked on the island side by a tall plateau, while along shore there is a beautiful sandy beach. Here Cabrillo, who discovered the island in 1542, is supposed to have been buried. I have hunted for his grave for forty years, uncovering many old Venetian and Russian beads, traded to the Indians for otter skins, but nothing to indicate Cabrillo's burial place.

You can get plenty of fish around the Northwest point outside the bay, and if you know where to look, all the lobsters and abalone you want.

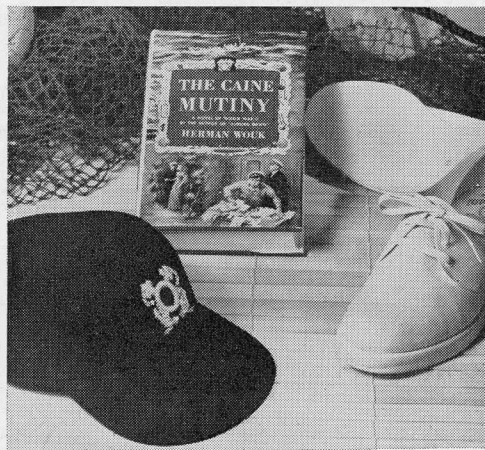
If you follow the road which leads to the top of the island, (it winds up a canyon about the center of the South side of the bay), you will come to the old ranch house, built about 1898, mostly of tongue-and-groove lumber washed ashore from old windjammers. On top towards the West you may come upon the relics of the vast number of Indians who lived there. There are millions of abalone, mussel and sea shells, countless bones of birds, seal and fish, and occasionally an Indian skeleton uncovered by the shifting sand. On the West end of the island, reached by walking from Cuyler's Harbor there are thousands of seals and some sea elephants. The latter are easy to approach because they do not make for the water as the seals do.

On this island my dear friend Herb Lester spent 13 years and raised his family. Shortly after the start of World War II he was told he would have to leave. He had become so attached to the island that he shot himself, leaving a note requesting that he be buried at that spot. You can see his grave on top

**Sea**

## **PHELPS-TERKEL**

Solves Your Problem of



## **YACHTING GIFTS**

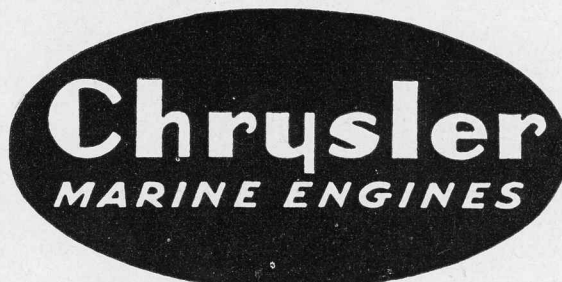
with FEATHERBED JACKETS • TOPSIDER SHOES  
SPRAYWEIGHT CAPS • DUTCH OVEN PARKAS  
NEW SEA BOOKS • SAILING SHIRTS  
YACHT KNIVES

... and Many Other Gifts and Gadgets

**MIRACLE MILE STORE ONLY • 5550 WILSHIRE BLVD.  
LOS ANGELES, CAL.**

## **Complete Marine Services**

- ★ HAUL-OUT — WAYS OR CRANE
- ★ PAINTING AND VARNISHING
- ★ WOOD-WORKING
- ★ RIGGING
- ★ MACHINE SHOP — WELDING
- ★ ELECTRICAL WORK — RADIO
- ★ BROKERAGE
- ★ NAVAL ARCHITECT — DESIGN
- ★ ENGINE OVERHAUL AND MAINTENANCE



**FACTORY APPROVED SALES AND SERVICE**

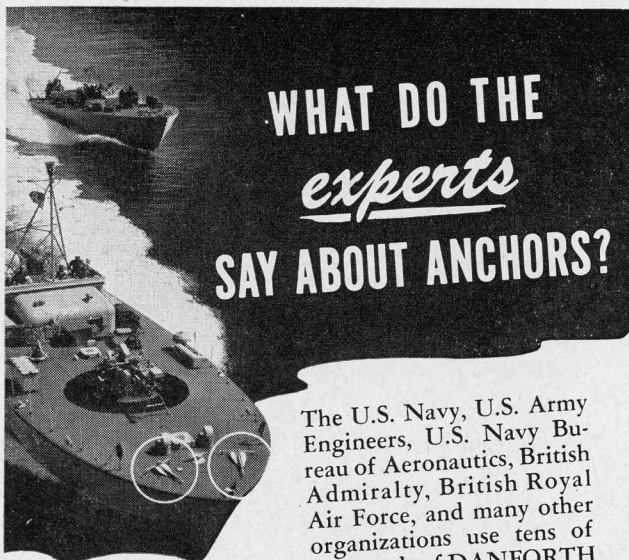
Complete Repair Services

On All Makes of Marine Engines

*We use only new and factory approved parts*

## **THE BOATSWAIN'S LOCKER**

**1003 Coast Highway, Newport Beach, Calif.**  
Beacon 5373 Beacon 6118  
John M. Webster • Sam C. Kauffman



## WHAT DO THE *experts* SAY ABOUT ANCHORS?

Experimental aluminum-hulled PT's carrying DANFORTH ANCHORS. Danforths have been used for their light weight and dependable holding power on naval vessels in operations around the world.

The U.S. Navy, U.S. Army Engineers, U.S. Navy Bureau of Aeronautics, British Admiralty, British Royal Air Force, and many other organizations use tens of thousands of DANFORTH ANCHORS because of their *superior tested holding power*. Take a tip from the experts... get more safety... with less weight... for less money... with a new Danforth Anchor.



# DANFORTH ANCHORS

2133 Allston Way, Berkeley 4, California

## THE MORE YOU LEARN

*about boats and the more you read about other people's experiences with them, the more you will enjoy your own boat.*

*Here are some books that will help you find that greater enjoyment:*

The Cruising Cookbook, by Russell K. Jones and C. McKim Norton.....\$3.50

Saves time both in planning meals as well as in shopping for them. Certainly enables you to give the crew a varied diet.

Navigation The Easy Way, by Carl D. Lane and John Montgomery.....\$2.95

This makes the study of navigation almost as easy as reading a novel.

Sport Fishing Boats, by S. Kip Farrington, Jr.....\$4.00

A mine of information for the fishing enthusiast. And talk about wrinkles and gadgets.

Boatbuilding in Your Own Back Yard, by S. S. Rabl.....\$5.00

Designed for the amateur builder, but includes the fine points of professional boatbuilding, processes of framing and planking, motor installation and joiner work, as well as sails and rigging. 150 illustrations, indexed.

Islands of California, by Duncan Gleason.....\$3.50

The absorbing story of these little-known islands. Second edition is almost gone.

Shipped postpaid on receipt of your order.

Add 3% Sales Tax on California orders, 3 1/2% in Los Angeles.

*Book Department*

## SEA—Western Yachting and Boating

844 Wall Street, Los Angeles 14, Calif.  
TRinity 0886

of the plateau over toward Harris Point.

If you should need water, there is a spring among the rocks on the shore back of the old wharf, the farthest one from where you are anchored. It does not taste very good, but it will do you no harm.

I feel I should say here that these instructions cover the period between June 15th and September 30th. During the other months you can never tell when the terrible ground swells may start to roll in. I have seen them break almost across from the northwest point to Prince Island. When they do, they run across Cuyler's in large bores, sometimes one to three feet high. With the wind from the West and the bores coming into the bay from the North, you can imagine the turmoil.

There are no other safe anchorages on San Miguel. On the extreme West end there is an anchorage so-called just East of the isthmus near Point Bennett, Adams Cove, where there are thousands of seals and sea elephants. It is not often safe and you have to land through a heavy shallow surf.

Cuyler's Harbor is the only feasible anchorage. Once you are safely ashore there you will love it and you will want to return again and again.

## SAN FRANCISCO SEA

(Continued from Page 15)

held its fifth annual rendezvous at the Corinthian Yacht Club on the weekend of October 13-14. San Francisco's Flotilla No. 11, under the command of Les Peter, Jr., was the host flotilla. This was a two-day affair with competition in the various phases of seamanship, such as rowing, life-ring throwing, and heaving line competition. This occupied most of Saturday afternoon. That evening everyone went ashore in pirate costume to attend the dinner dance at the clubhouse. Some of the costumes were enough to scare even Black Beard himself had he been present!

The gathering was honored by the Presence of Captain N. S. Fulford, Chief Director, Coast Guard Auxiliary, Washington, D. C.; National Commander, Coast Guard Auxiliary, Bert C. Pouncey, Memphis, Tennessee; Rear Admiral R. T. McElligott; and Lt.-Comdr. T. F. Hettrich, Director, Coast Guard Auxiliary, 12th Naval District.

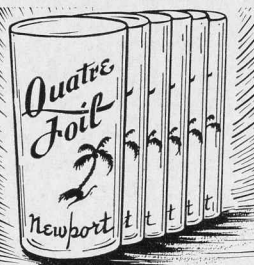
## S.B.R.A. News

SBRA of Northern California Season Champions, 1951:

Class	Boat	Club	Skipper
El Toro	Gold Bug	LMSC	Shirley Howland
Moon	Lunette	CYC	Nancy Rohner

## Your BOAT'S NAME & HOME PORT

Hand Painted on Set of 6 Sparkling Bell Crystal Tumblers



- WEIGHTED BOTTOMS for seaworthiness
- SAFETY RIMS for endurance
- HAND LETTERING for distinction

Afloat or at home, you'll be proud of these big 11 oz. water or hi-ball glasses. You'll want several sets... for yourself and gift giving. Send coupon today and enclose only \$6.00 for the set, or two sets for \$10.00, tax included. House flag and club burgee added for \$1.00 set extra. Sorry no C.O.D.s.

WORKRITE PROD. CO., (since 1908)  
808 W. Doran St.,  
Glendale 3, Calif.

Send me Postpaid.....sets of  
Personalized Glasses; I enclose \$.....

Name of Boat (print).....

Home Port.....Deliver to:

Name.....

Address.....

City.....Zone.....State.....